

# Glorie, Isuse, Doamne...

N. Moldoveanu

*mp* **Maestoso** ♩ = 70

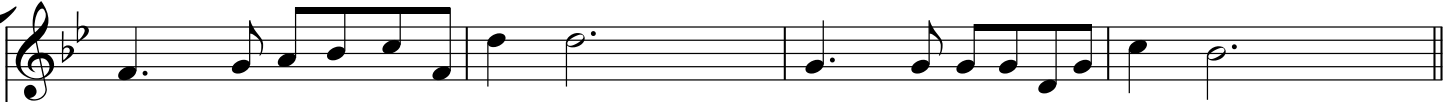
1. Glo - ri - e, I - su - se, Doam - ne ne'n - ce - tat Ți se cu - vi - ne,  
1. Glo - ri - e, I - su - se, Doam - ne ne'n - ce - tat Ți se cu - vi - ne,  
1. Glo - ri - e, I - su - se, Doam - ne ne'n - ce - tat Ți se cu - vi - ne,

1. Glo - ri - e, I - su - se, Doam - ne ne'n - ce - tat Ți se cu - vi - ne,  
*p* Sib Solm Dom Mib/Sol

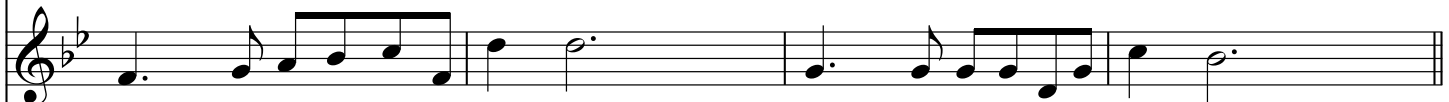
T	6	3	3	6
A	6	3	4	8
B	7	3	0	8
	8	5	3	5
		3		

*p*

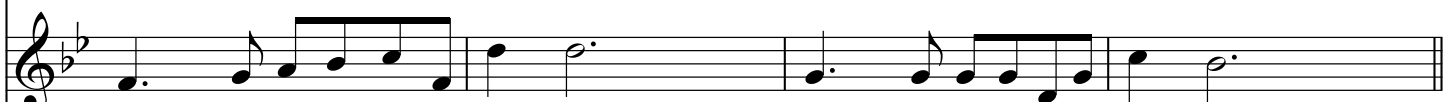
*p* **Maestoso** ♩ = 70



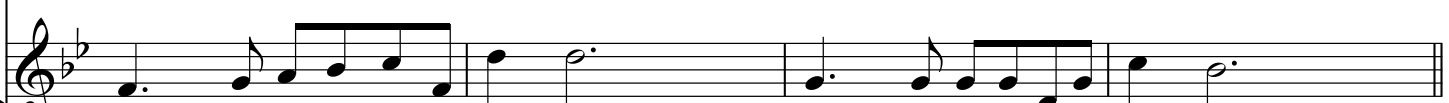
pen - tru ma-rea mân-tu - i - re, ce'am pri-mi-t'o de la Ti - ne.



pen - tru ma-rea mân-tu - i - re, ce'am pri-mi-t'o de la Ti - ne.



pen - tru ma-rea mân-tu - i - re, ce'am pri-mi-t'o de la Ti - ne.



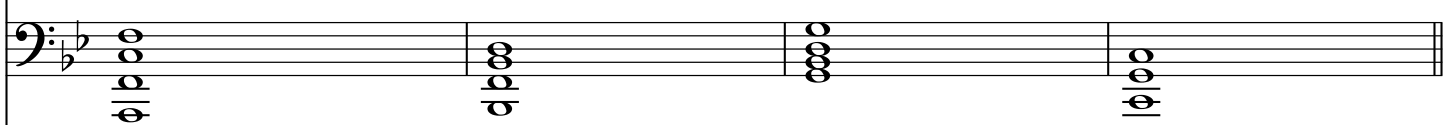
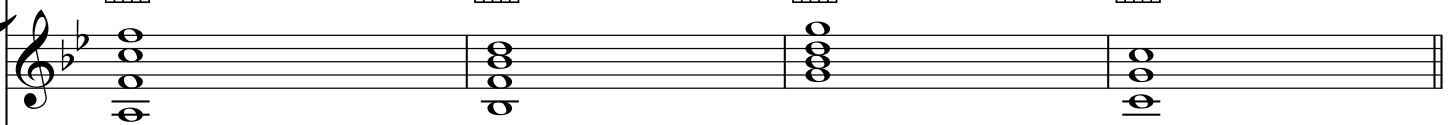
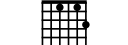
pen - tru ma-rea mân-tu - i - re, ce'am pri-mi-t'o de la Ti - ne.

Fa/La

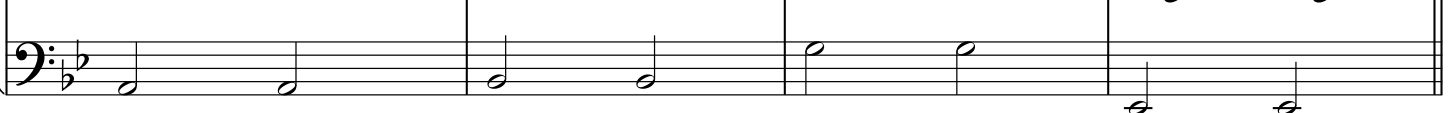
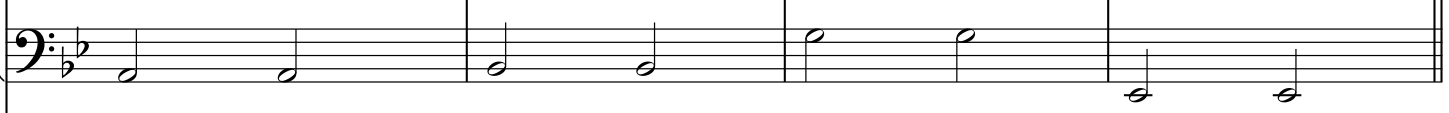
Sib

Solm

Dom/Mib



T	1	3	3	1
A	3	3	3	0
B	0	3	5	3
		1		



9 Ref.

Glo - ri - e, I - su - se!

Glo - ri - e, I - su - se!

Glo - ri - e, I - su - se!

Glo - ri - e, I - su - se!

Glo - ri - e, I - su - se!

Glo - ri - e, I - su - se!

Glo - ri - e, I - su - se!

Glo - ri - e, I - su - se!

Solm

Mib

Fa

Dom

T	3	6	5
A	3	8	6
B	5	8	5
		1	3

Ți Se ca-de ne-cur-mat, căci Tu ne'ai răs-cum-pă-rat, glo - ri-e, glo - ri-e!

Ți Se ca-de ne-cur-mat, căci Tu ne'ai răs-cum-pă-rat, glo - ri-e, glo - ri-e!

Ți Se ca-de ne-cur-mat, căci Tu ne'ai răs-cum-pă-rat, glo - ri-e, glo - ri-e!

Ți Se ca-de ne-cur-mat, căci Tu ne'ai răs-cum-pă-rat, glo - ri-e, glo - ri-e!

Sib Sib Dom Solm

T	1	6	4	3
A	3	6	5	3
B	1	7	5	5
		8	3	3

2. Pen - tru ha-rul cel de as - tăzi, pen - tru ha-rul ca-re vi - ne,

2. Pen - tru ha-rul cel de as - tăzi, pen - tru ha-rul ca-re vi - ne,

2. Pen - tru ha-rul cel de as - tăzi, pen - tru ha-rul ca-re vi - ne,

2. Pen - tru ha-rul cel de as - tăzi, pen - tru ha-rul ca-re vi - ne,

Sib

Solm

Dom

Mib/Sol

T	6	3	3	6
A	6	3	4	8
B	7	3	0	8
	8	5	3	5
		3		



pen - tru dul-cea Ta lu - mi - nă, glo - ri - e Ți se cu - vi - ne.

pen - tru dul-cea Ta lu - mi - nă, glo - ri - e Ți se cu - vi - ne.

pen - tru dul-cea Ta lu - mi - nă, glo - ri - e Ți se cu - vi - ne.

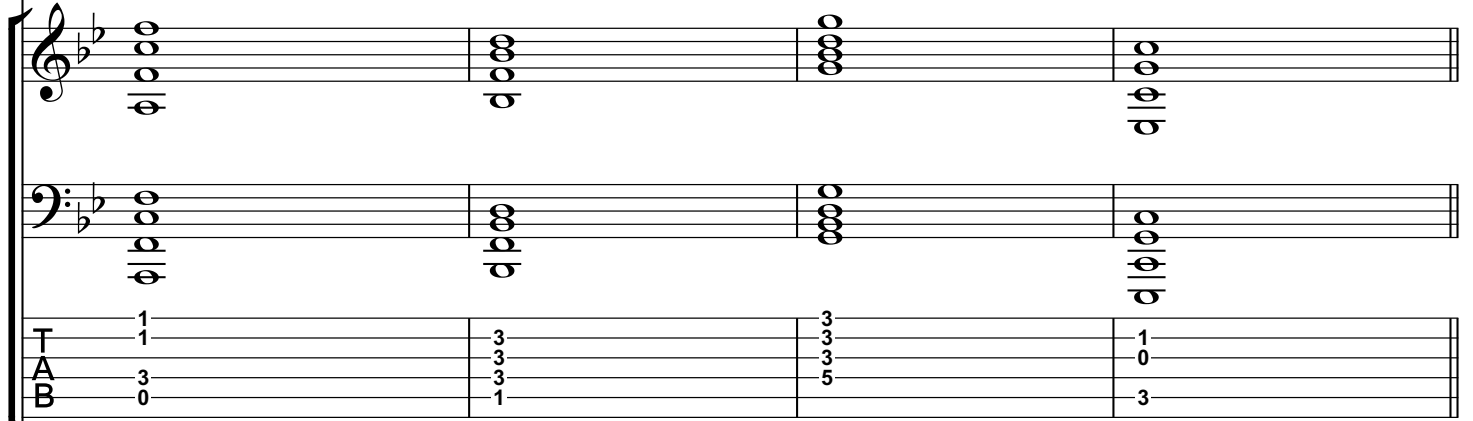
pen - tru dul-cea Ta lu - mi - nă, glo - ri - e Ți se cu - vi - ne.

Fa/La

Sib

Solm

Dom/Mib

T	1	3	3	1
A	3	3	3	0
B	0	3	5	3



25 Ref.



Glo - ri - e, I - su - se! Glo - ri - e, I - su - se!



Glo - ri - e, I - su - se! Glo - ri - e, I - su - se!



Glo - ri - e, I - su - se! Glo - ri - e, I - su - se!



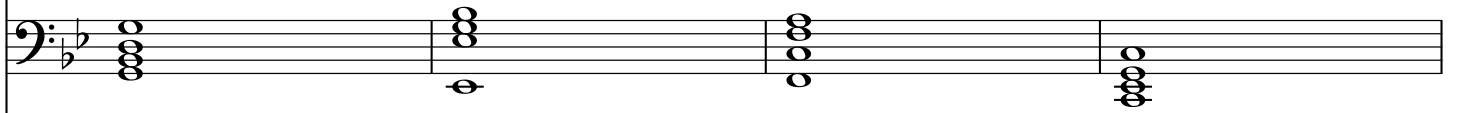
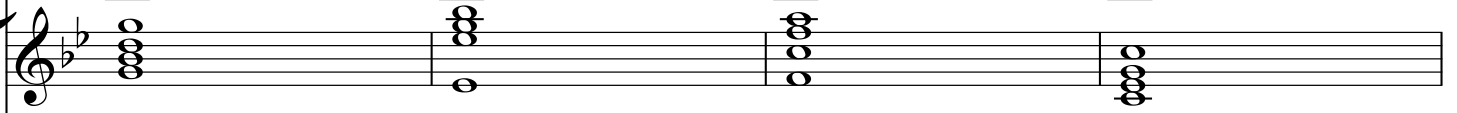
Glo - ri - e, I - su - se! Glo - ri - e, I - su - se!

Solm

Mib

Fa

Dom



T	3	6	5
A	3	8	6
B	5	8	5
		1	3





Ți Se ca-de ne-cur-mat, căci Tu ne'ai răs-cum-pă-rat, glo - ri-e, glo - ri-e!



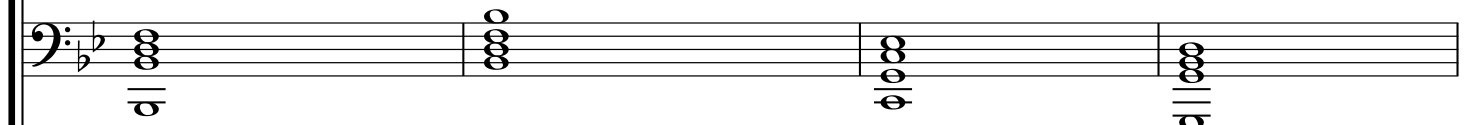
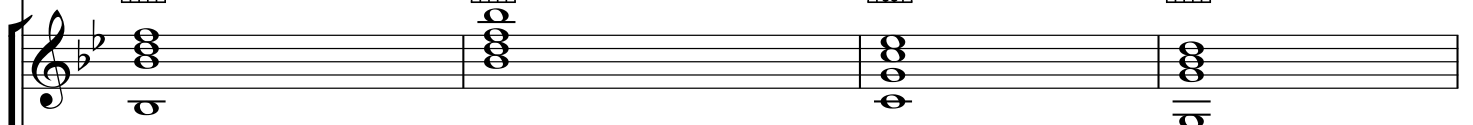
Ți Se ca-de ne-cur-mat, căci Tu ne'ai răs-cum-pă-rat, glo - ri-e, glo - ri-e!



Ți Se ca-de ne-cur-mat, căci Tu ne'ai răs-cum-pă-rat, glo - ri-e, glo - ri-e!



Ți Se ca-de ne-cur-mat, căci Tu ne'ai răs-cum-pă-rat, glo - ri-e, glo - ri-e!



T	1	6	4	3
A	3	6	5	3
B	1	7	5	5
		8	3	3





3. Pen - tru sfân-ta moș-te - ni - re, ce ne'ai pre-gă-ti-t'o Mâi - ne,

3. Pen - tru sfân-ta moș-te - ni - re, ce ne'ai pre-gă-ti-t'o Mâi - ne,

3. Pen - tru sfân-ta moș-te - ni - re, ce ne'ai pre-gă-ti-t'o Mâi - ne,

3. Pen - tru sfân-ta moș-te - ni - re, ce ne'ai pre-gă-ti-t'o Mâi - ne,

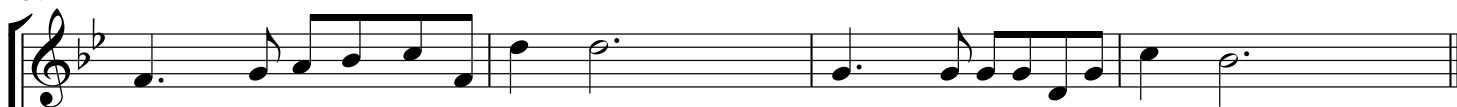
Sib

Solm

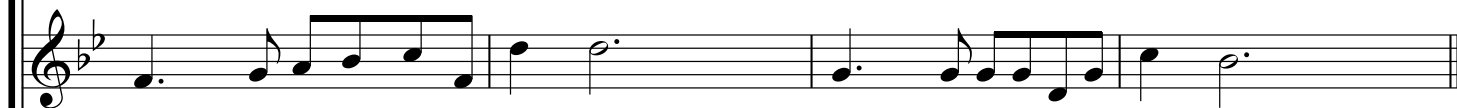
Dom

Mib/Sol

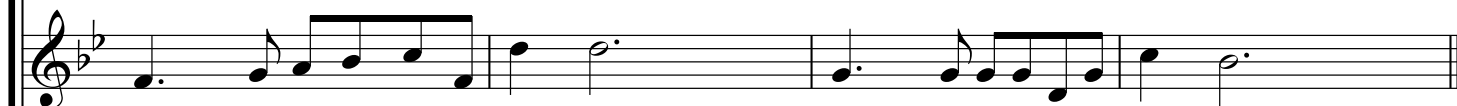
T	6	3	3	6
A	6	3	4	8
B	7	3	0	8
	8	5	3	5
		3		



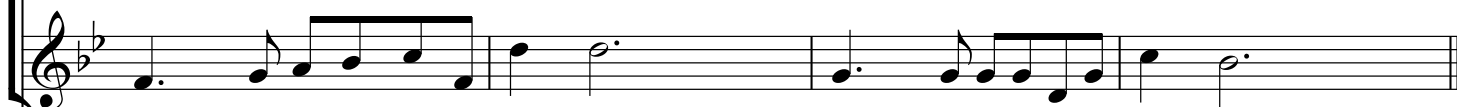
pen - tru tot ce'a-cum ne dă - rui, glo - ri-e Ți se cu - vi - ne.



pen - tru tot ce'a-cum ne dă - rui, glo - ri-e Ți se cu - vi - ne.



pen - tru tot ce'a-cum ne dă - rui, glo - ri-e Ți se cu - vi - ne.



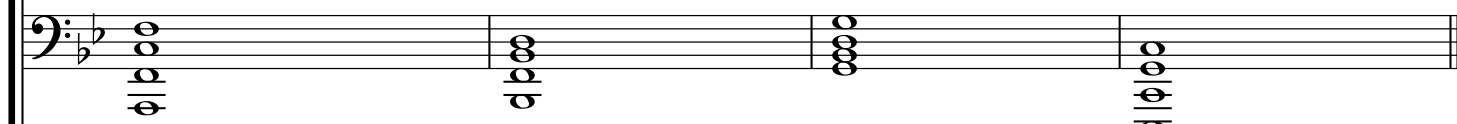
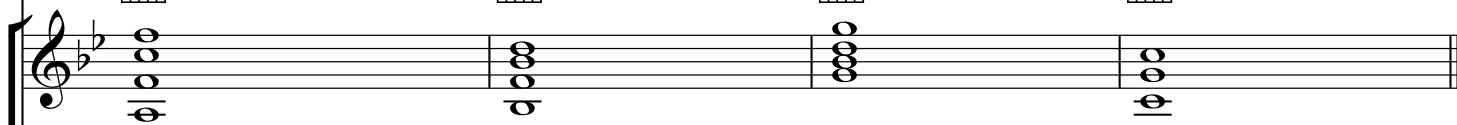
pen - tru tot ce'a-cum ne dă - rui, glo - ri-e Ți se cu - vi - ne.

Fa/La

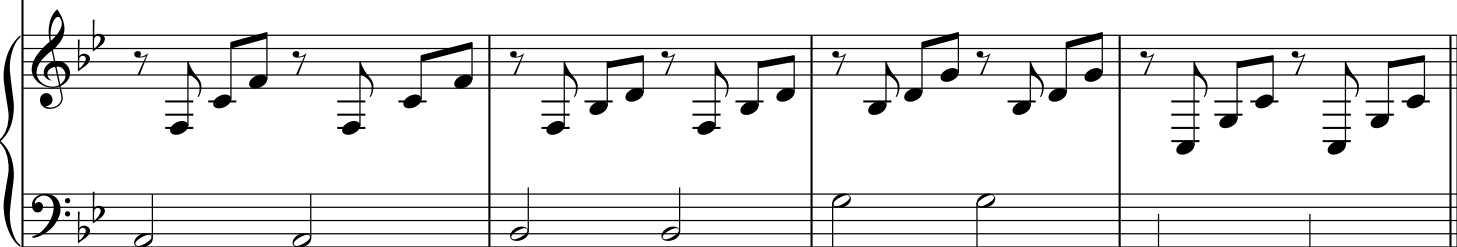
Sib

Solm

Dom/Mib



T	1	3	3	1
A	3	3	3	0
B	0	3	5	3



41 Ref.

Glo - ri - e, I - su - se!      Glo - ri - e, I - su - se!

Glo - ri - e, I - su - se!      Glo - ri - e, I - su - se!

Glo - ri - e, I - su - se!      Glo - ri - e, I - su - se!

Glo - ri - e, I - su - se!      Glo - ri - e, I - su - se!

Glo - ri - e, I - su - se!

Glo - ri - e, I - su - se!

Solm

Mib

Fa

Dom



TAB

3	6	5	1
3	8	6	0
3	8	5	1
5	1	3	3

Piano accompaniment (Right Hand)

Piano accompaniment (Left Hand)



Ți Se ca-de ne-cur-mat, căci Tu ne'ai răs-cum-pă-rat, glo - ri-e, glo - ri-e!



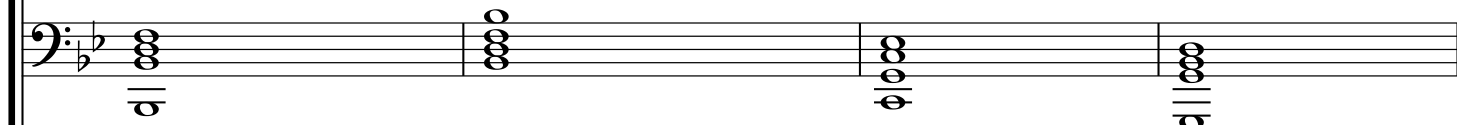
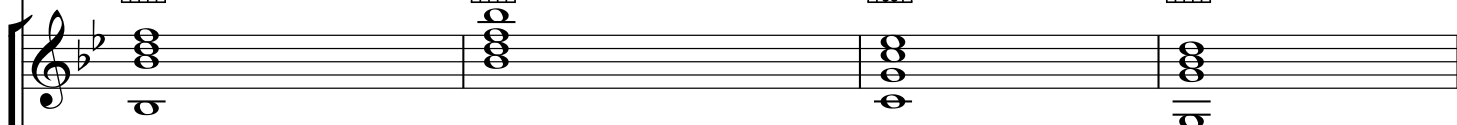
Ți Se ca-de ne-cur-mat, căci Tu ne'ai răs-cum-pă-rat, glo - ri-e, glo - ri-e!



Ți Se ca-de ne-cur-mat, căci Tu ne'ai răs-cum-pă-rat, glo - ri-e, glo - ri-e!



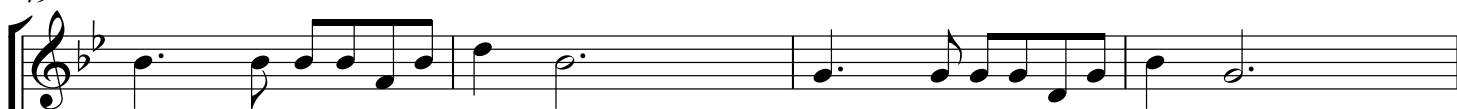
Ți Se ca-de ne-cur-mat, căci Tu ne'ai răs-cum-pă-rat, glo - ri-e, glo - ri-e!



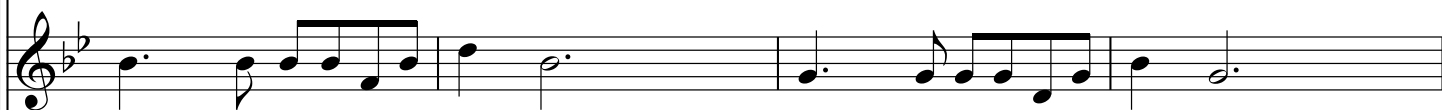
T	1	6	4	3
A	3	6	5	3
B	1	7	5	5
		8	3	3



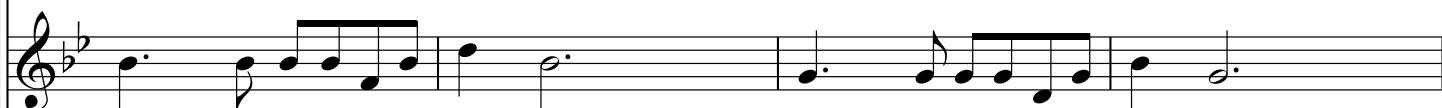
49



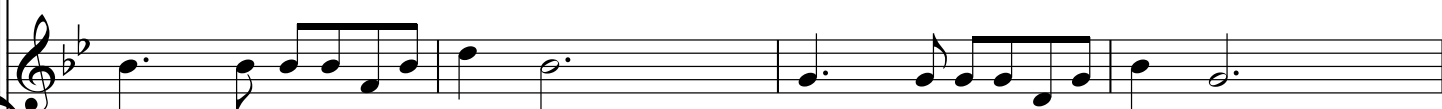
4. Pen - tru fla-că-ra iu - bi - rii, tai - na fe-ri-ci-rii pli - ne,



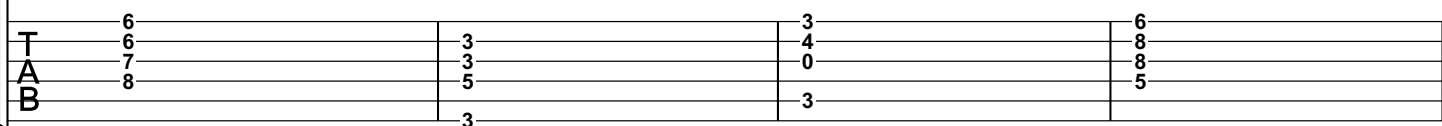
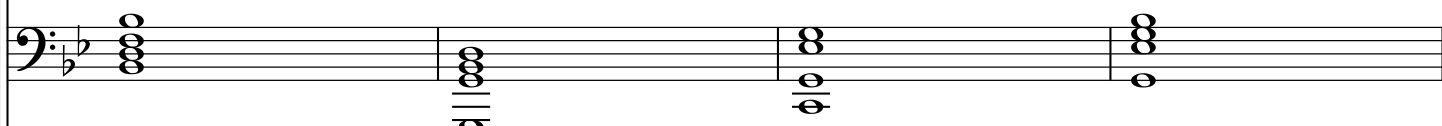
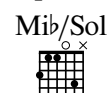
4. Pen - tru fla-că-ra iu - bi - rii, tai - na fe-ri-ci-rii pli - ne,

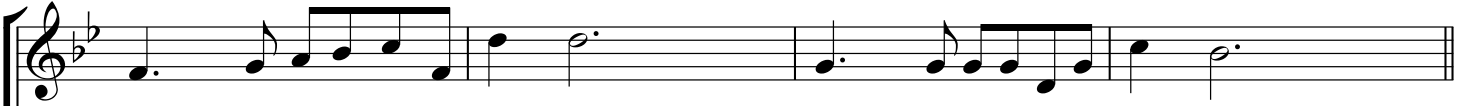


4. Pen - tru fla-că-ra iu - bi - rii, tai - na fe-ri-ci-rii pli - ne,

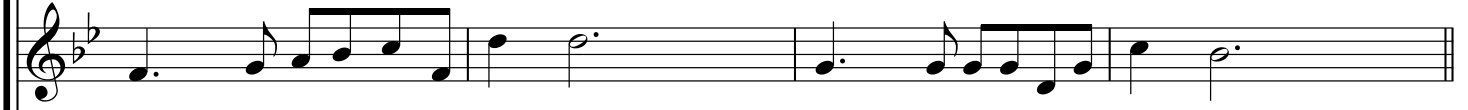


4. Pen - tru fla-că-ra iu - bi - rii, tai - na fe-ri-ci-rii pli - ne,

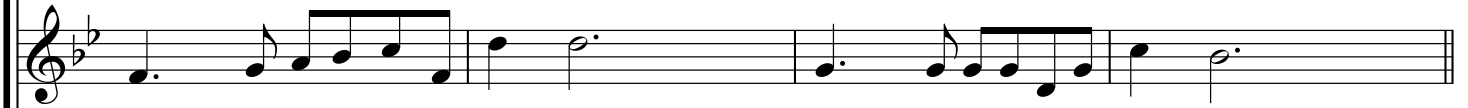




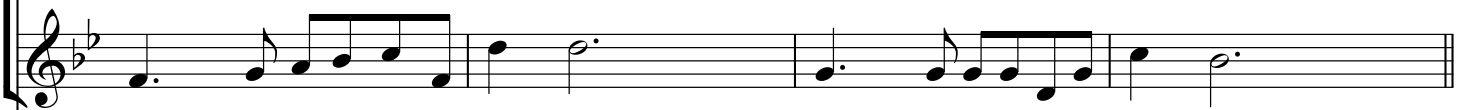
ca - re ne'a a-prins fi - in - ța, glo - ri-e Ți se cu - vi - ne.



ca - re ne'a a-prins fi - in - ța, glo - ri-e Ți se cu - vi - ne.



ca - re ne'a a-prins fi - in - ța, glo - ri-e Ți se cu - vi - ne.



ca - re ne'a a-prins fi - in - ța, glo - ri-e Ți se cu - vi - ne.

Fa/La



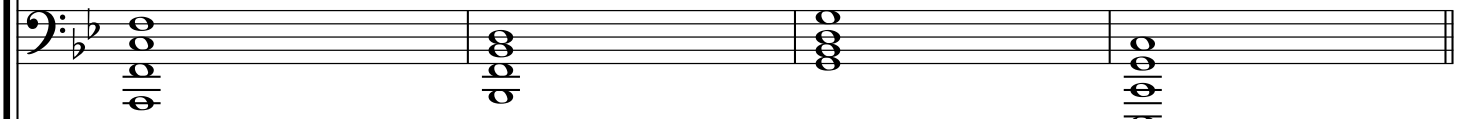
Sib



Solm



Dom/Mib



T	1	3	3	1
A	3	3	3	0
B	0	3	5	3



57 Ref.

Glo - ri - e, I - su - se!      Glo - ri - e, I - su - se!

Glo - ri - e, I - su - se!      Glo - ri - e, I - su - se!

Glo - ri - e, I - su - se!      Glo - ri - e, I - su - se!

Glo - ri - e, I - su - se!      Glo - ri - e, I - su - se!

Glo - ri - e, I - su - se!      Glo - ri - e, I - su - se!

Solm

Mib

Fa

Dom



T	3	6	5
A	3	8	6
B	5	8	5
		1	3

Ți Se ca-de ne-cur-mat, căci Tu ne'ai răs-cum-pă-rat, glo - ri-e, glo - ri-e!

Ți Se ca-de ne-cur-mat, căci Tu ne'ai răs-cum-pă-rat, glo - ri-e, glo - ri-e!

Ți Se ca-de ne-cur-mat, căci Tu ne'ai răs-cum-pă-rat, glo - ri-e, glo - ri-e!

Ți Se ca-de ne-cur-mat, căci Tu ne'ai răs-cum-pă-rat, glo - ri-e, glo - ri-e!

Sib Sib Dom Solm

T	1	6	4	3
A	3	6	5	3
B	1	7	5	5
		8	3	3



65



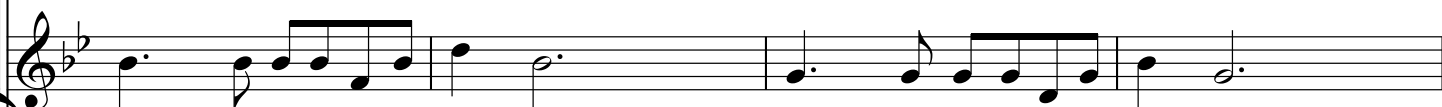
5. Pen - tru a-de-vă-rul veș - nic, pen - tru ne'n-țe-le-sul bi - ne,



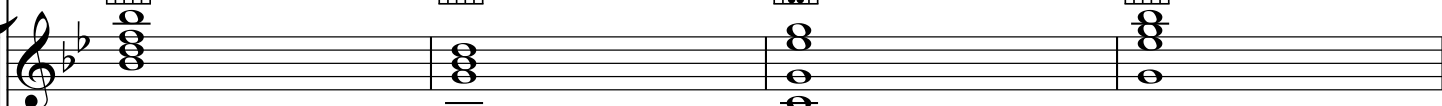
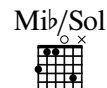
5. Pen - tru a-de-vă-rul veș - nic, pen - tru ne'n-țe-le-sul bi - ne,



5. Pen - tru a-de-vă-rul veș - nic, pen - tru ne'n-țe-le-sul bi - ne,



5. Pen - tru a-de-vă-rul veș - nic, pen - tru ne'n-țe-le-sul bi - ne,



T	6	3	3	6
A	6	3	4	8
B	7	3	0	8
	8	5	3	5
		3		





pen - tru toa-te, pen-tru toa - te, glo - ri-e Ți se cu - vi - ne.

pen - tru toa-te, pen-tru toa - te, glo - ri-e Ți se cu - vi - ne.

pen - tru toa-te, pen-tru toa - te, glo - ri-e Ți se cu - vi - ne.

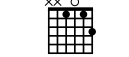
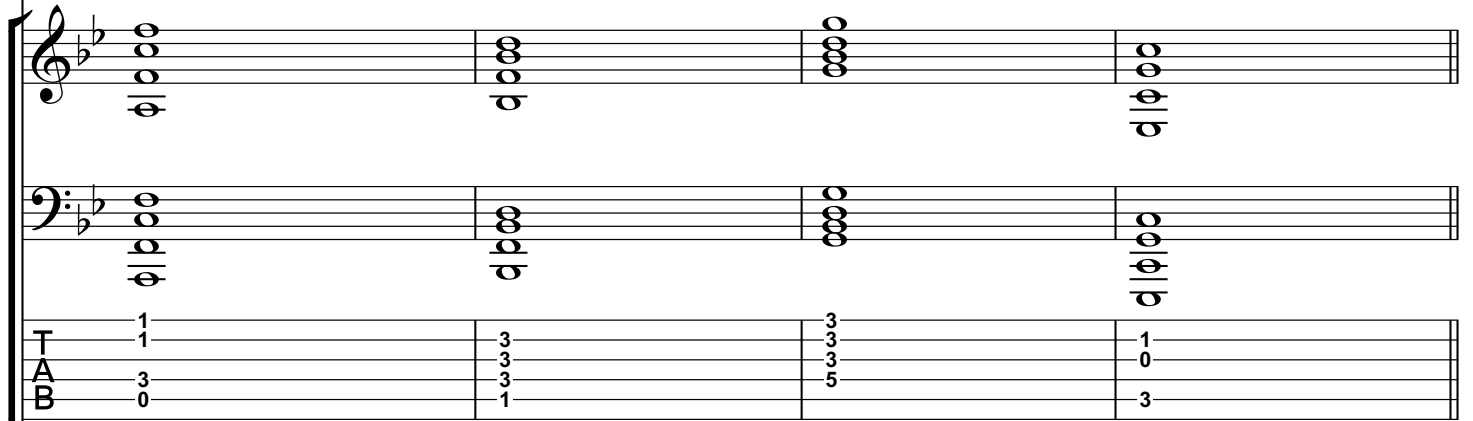
pen - tru toa-te, pen-tru toa - te, glo - ri-e Ți se cu - vi - ne.

Fa/La

Sib

Solm

Dom/Mib

T	1	3	3	1
A	3	3	3	0
B	0	1	5	3



73 Ref.

Glo - ri - e, I - su - se!      Glo - ri - e, I - su - se!

Glo - ri - e, I - su - se!      Glo - ri - e, I - su - se!

Glo - ri - e, I - su - se!      Glo - ri - e, I - su - se!

Glo - ri - e, I - su - se!      Glo - ri - e, I - su - se!

Glo - ri - e, I - su - se!

Glo - ri - e, I - su - se!

Solm

Mib

Fa

Dom



TAB

3	6	5	1
3	8	6	0
3	8	5	1
5	1	3	3



Ți Se ca-de ne-cur-mat, căci Tu ne'ai răs-cum-pă-rat, glo - ri - e, glo - ri - e!



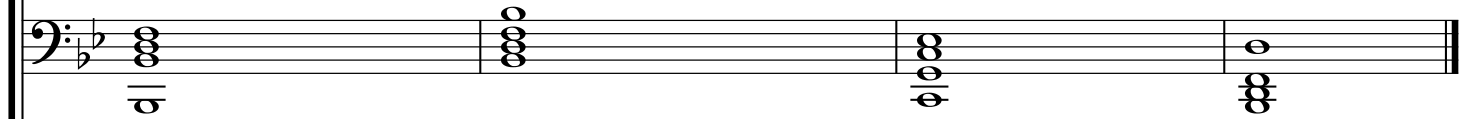
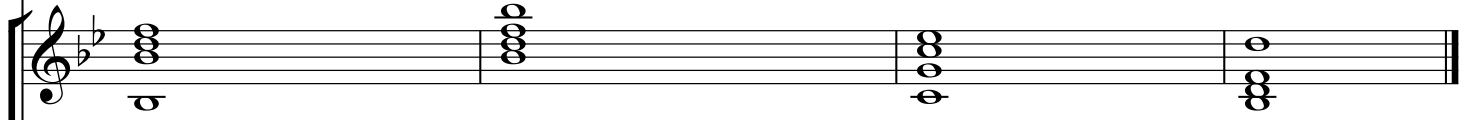
Ți Se ca-de ne-cur-mat, căci Tu ne'ai răs-cum-pă-rat, glo - ri - e, glo - ri - e!



Ți Se ca-de ne-cur-mat, căci Tu ne'ai răs-cum-pă-rat, glo - ri - e, glo - ri - e!



Ți Se ca-de ne-cur-mat, căci Tu ne'ai răs-cum-pă-rat, glo - ri - e, glo - ri - e!



T	1	6	4	3
A	3	6	5	3
B	1	7	5	5
		8	3	6

